

# Air Cooling Jacket for D-Series Industrial Ethernet Laser Sensor 500306

## Manual

V 1.1

24.04.2019



## Table of content

1 General Information .....	3
2 Specification .....	3
3 Assembly .....	3
4 Base Alignment .....	6
5 Mounting air line .....	6
5.1 LED Status.....	7
6 Pictures .....	7
7 Air Cooling Jacket Structure .....	8
7.1 Air Cooling.....	9
8 Drawing .....	10



## 1 General Information

- This Air Cooling Jacket can be used with all sensors that are equipped with the sensor extensions PROFINET, Ethernet/IP and EtherCAT. The Dimetix D-Series Laser Sensors that are equipped with standard interfaces can't be used with this Air Cooling Jacket.
- The D-Series Laser Sensor, Air-cleaner, Air-dryer, Air-filter, Pressure reduction and air regulator are not included.

## 2 Specification

Outer Tube diameter:	8mm
Air nipple size:	PT 1/8"
Cable gland:	M32
Mounting:	Mounting slots for M5 / M4 screws
Size:	width: 85mm x length: 295mm x height: 158mm
Weight approx.:	1.470kg
Material:	Housing body: Aluminum Hard anodizing
Not included:	The D-Series Laser Sensor, Air-cleaner, Air-dryer, Air-filter, Pressure reduction, air regulator are not included
Compatible to:	All Dimetix D-Series Laser Sensors <b>with Industrial Ethernet extensions</b>
Important:	Not for standart exchangeble cover type

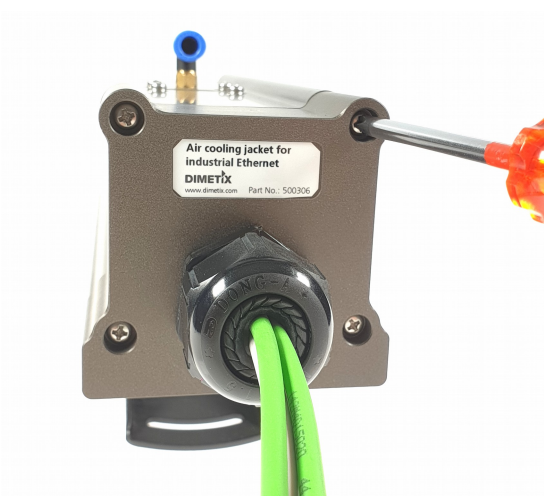
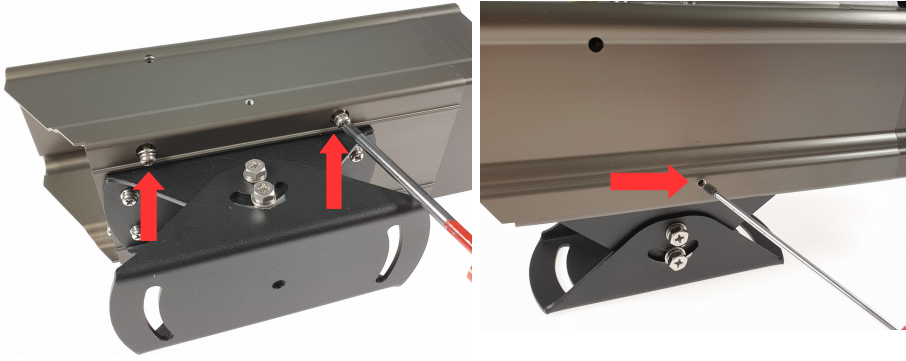
## 3 Assembly

	<p>First cut a hole in the rubber seal which you find in the cable gland.</p>
	<p>Insert the cables into the cable gland, then insert them into the rubber seal.</p>



	<p>Insert the cables into the cable gland of the rear cover. Then push the rubber seal into the cable gland.</p>
	<p>Remove the four hexagonal socket set screws. You may need these tapped holes to mount the sensor into the air cooling jacket.</p>
	<p>Connect the cables for Power and Ethernet interface to the rear cover.</p>
	<p>Slide the wired sensor into the air cooling jacket.</p>



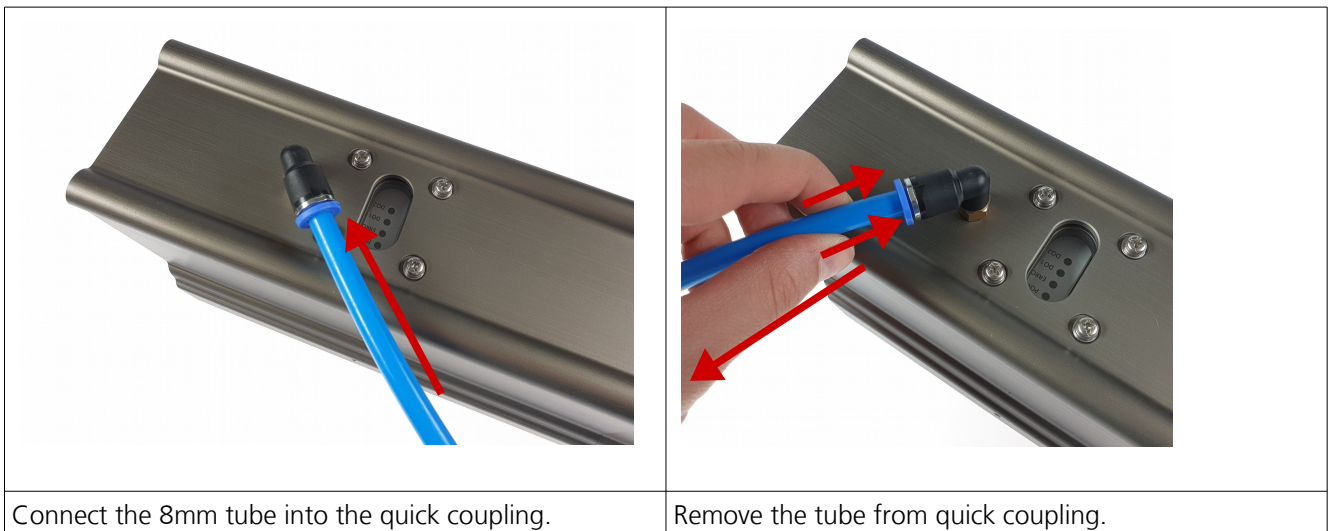
	<p>Fasten the cable gland after adjusting an appropriate cable length to be inserted.</p> <p>Close the rear cover of the jacket and fasten the four screws. (M4 x 50)</p>
	<p>To fix the device in the case you have 2 options.</p> <p>Option 1: Set the four screws and attach the sensor to the housing.</p> <p>Option 2: Fix the sensor after tightening the screws on both sides of the jacket.</p>



## 4 Base Alignment



## 5 Mounting air line

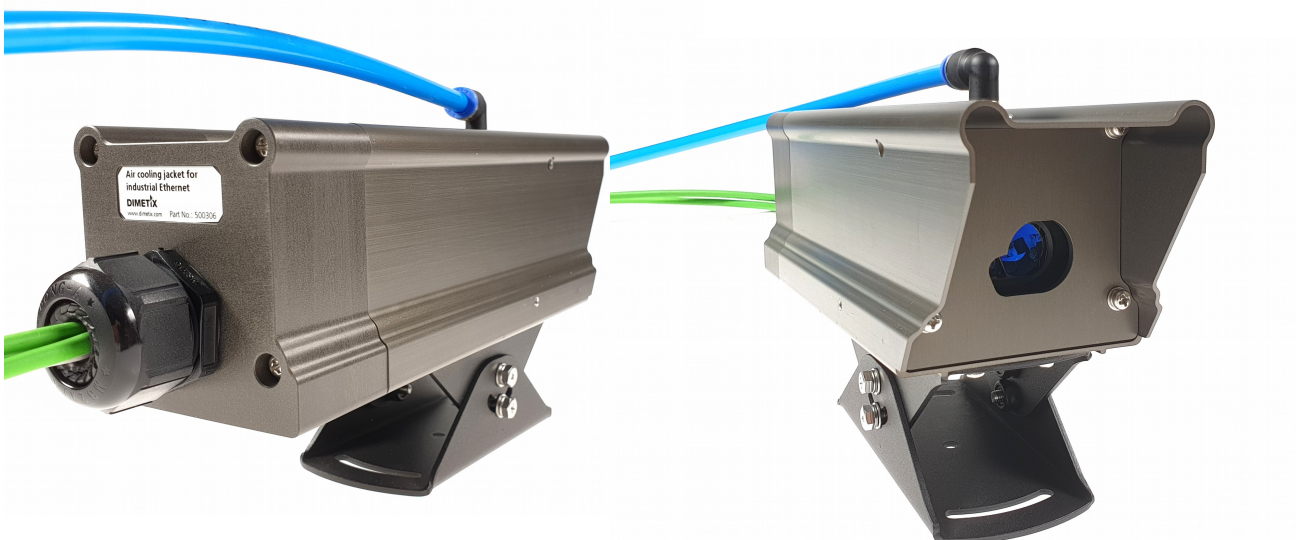


## 5.1 LED Status



The user can see the sensor's operating status through the clear glasses on the housing top without pulling the laser sensor out. This makes it convenient to do maintenance or monitoring device on site.

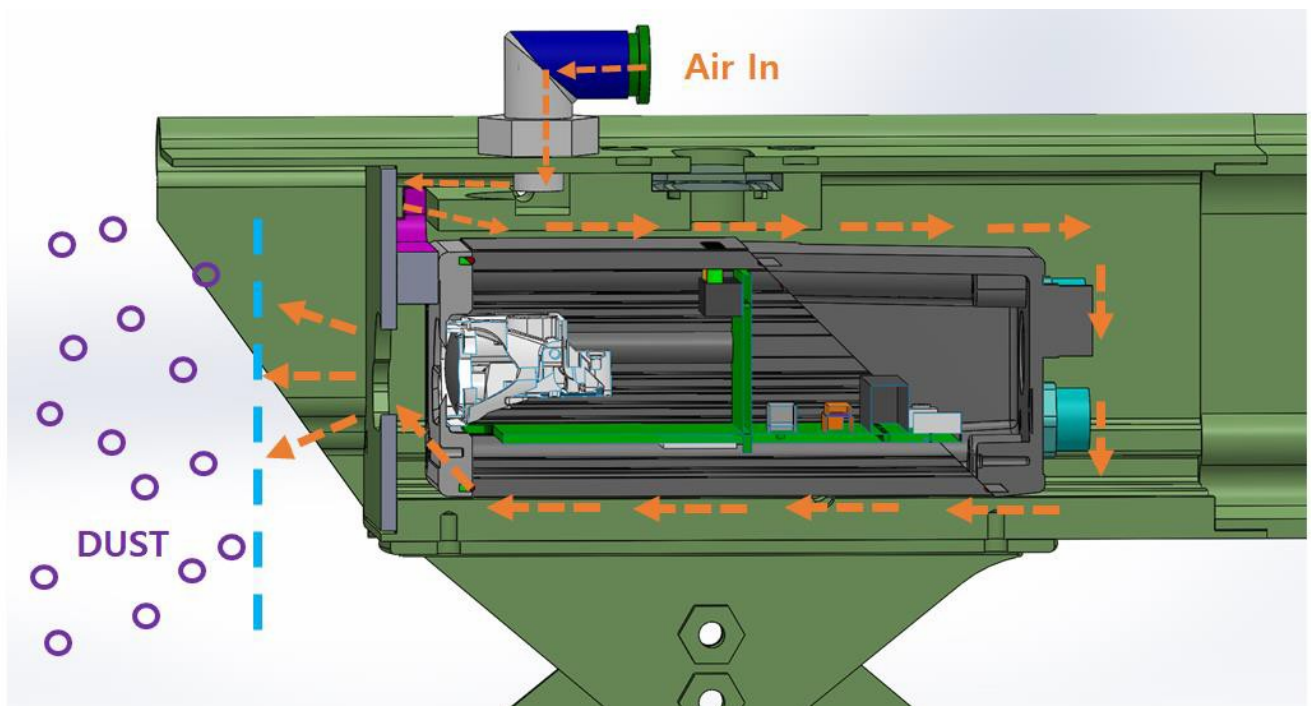
## 6 Pictures



## 7 Air Cooling Jacket Structure

This air cooling jacket is designed to let the air out the front thus the contaminated air can not go through the chamber.

A quick coupler is used as an air nipple, but it doesn't matter to replace it with other nipples if it is inconvenient to use the quick coupler.

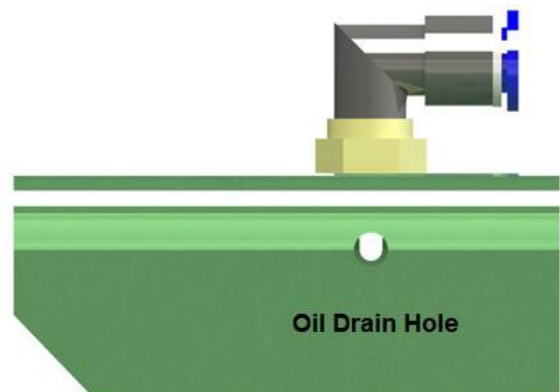
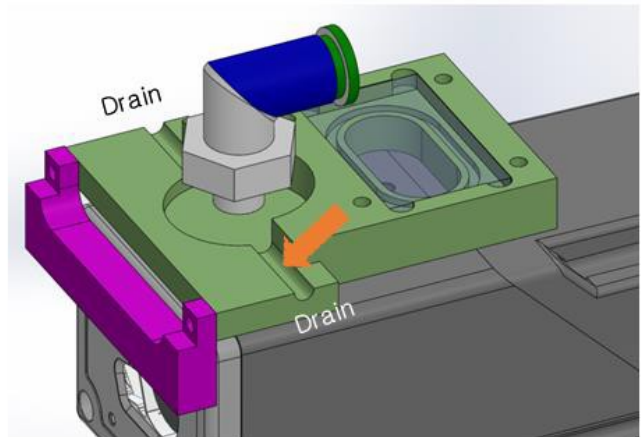
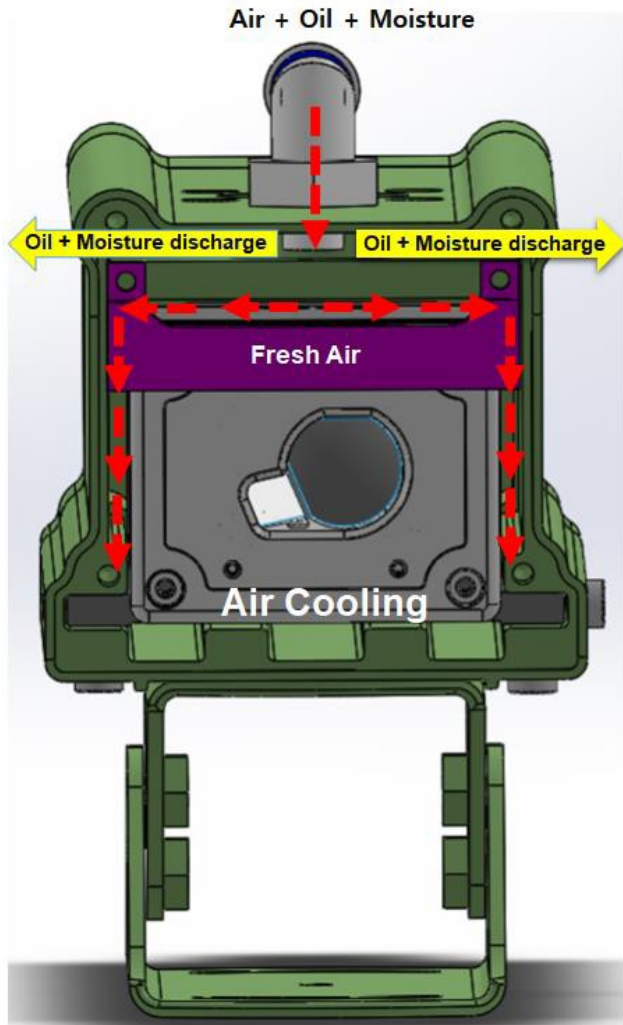




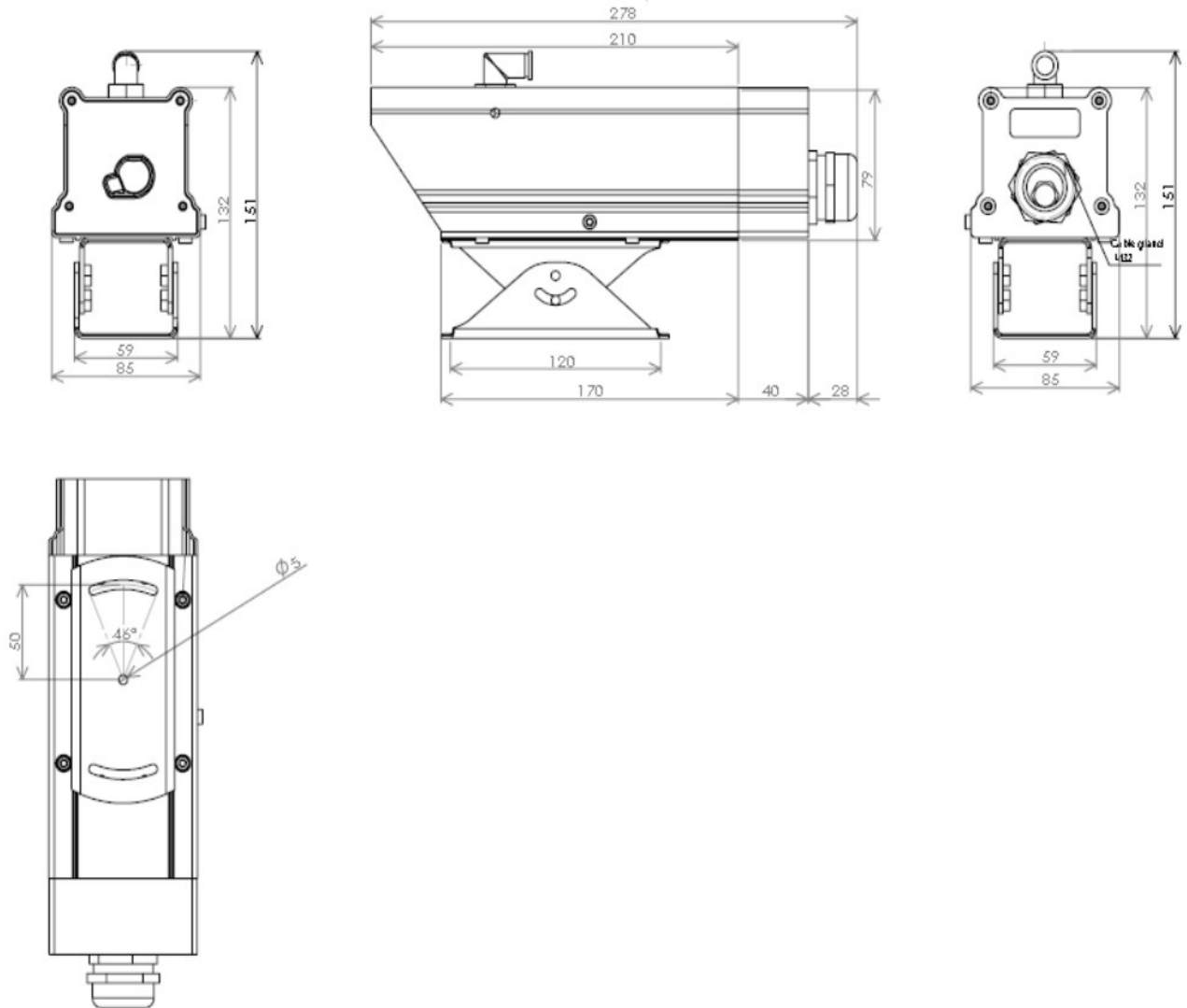
### 7.1 Air Cooling

Generally, the provided air must be clean, oil- and moisture free. Please use all the necessary equipment.

The air guide block has a jaw trough which oil and moisture are discharged through drainage channels. Only fresh air is left inside the housing, thus it performs both cooling and air purging functions.



## 8 Drawing



Dimensions in mm

Weight: 1.470 kg

